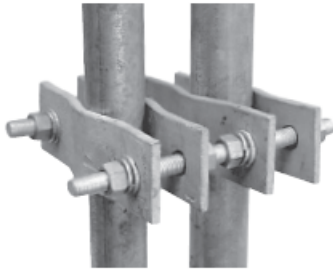




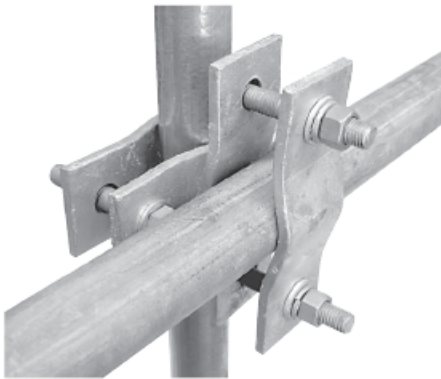
ANTENNA MOUNT CLAMPS



UC-1

The UC1 is a heavy duty antenna clamp designed to mount larger antennas. The clamp is constructed of 6mm stamped galvanised steel plates, nuts, bolts and locking washers and allow for a high degree of adjustment during mounting. See the table below for suggested mounting applications.

NOTE: UC-12 includes two UC-1 clamps and UC-13 includes three UC-1 clamps



UCR-1

The UCR1 is a heavy duty antenna clamp with a welded centre piece. All parts are hot dipped galvanised.

See the table below for suggested mounting applications.



UB1

The UB1 antenna clamps are simple U-Bolt assemblies with "teeth", around the inside of locating plates to prevent the antenna from slipping or shifting once mounted. Two separate clamps illustrated.

See the table below for suggested mounting applications.

Stainless steel U-Bolt assemblies also available: UB2

CLAMP	UC1	UCR1	UB1
Weight per clamp lbs.	4.2	4.2	0.5
Body Finish	Galvanized	Galvanized	Zinc plated
Fastener Finish	Galvanized	Galvanized	Zinc plated
Min. boom size inches	.75 both planes	.75 both planes	1.0
Max. boom size inches	3.0 both planes	3.0 both planes	1.0
Application	In-line mounting of two tubular or two tubular in 90° line	90° mounting with 3" bolts for larger boom antennas	In-line mounting small collinear and ground plane antennas