

UHF Directional Panel Antenna

380-430MHz

BPA3843-65-14

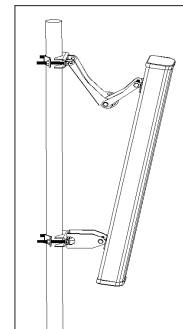
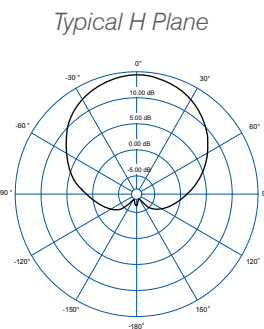
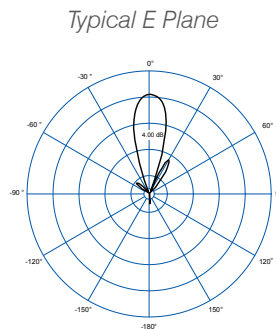
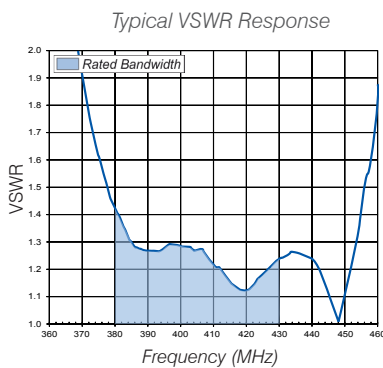


The BPA series panel antennas provide excellent gain with a directional radiation pattern, ideal for coverage requirements in “corridor” and sectorised applications. These panel antennas are fully enclosed to aid installation, provide waterproofing, and to resist bird attack. The main lobe of these antennas is strong, offering excellent beam control, upper side lobe suppression and front to back ratio, ensuring the integrity of the pattern.

Proven design and construction techniques provide not only excellent radiation characteristics but also high levels of intermodulation and noise suppression. IM performance is -150dBc based on a two-carrier test. The antenna rests at ground potential and offers excellent lightning protection and reduced precipitation noise.

Features:

- Analogue and digital technology compatible
- Ideal for highly populated sites requiring “corridor” or sectorised coverage
- Industry leading PIM ratings (-150dBc) providing low IM and low noise characteristics for optimum performance
- Convenient mounting style suits various pole, mast and wall installation locations
- Mechanical tilt mounting brackets supplied
- DC grounded for superior lightning protection



Specifications

Model Number	BPA3843-65-14
Nominal Gain <i>dBi (dBd)</i>	14 (12)
Frequency <i>MHz</i>	380-430
Tuned Bandwidth <i>MHz</i>	Entire band
Polarity	Vertical
VSWR (Return Loss)	<1.5:1 (14dB)
Nominal Impedance Ω	50
Downtilt	0° to 10° adjustable
Vertical Beamwidth °	18 typ.
Horizontal Beamwidth °	65 typ.
Upper Side Lobe Suppression <i>dB</i>	< -15
Front to Back Ratio <i>dB</i>	> 23
Input Power <i>W</i>	500
Passive IM 3rd order <i>dBc</i>	-150

Mechanical

Model Number	BPA3843-65-14
Construction	Fully enclosed in radome
Length x Width x Depth <i>mm (in)</i>	2660 x 670 x 200 (104.7 x 26.4 x 7.9)
Weight <i>kg (lbs)</i>	22 (48.4)
Weight including clamps <i>kg (lbs)</i>	26 (57.4)
Termination	1 x DIN female
Clamps (provided)	Adjustable downtilt style
Clamp Diameter <i>mm (in)</i>	Suits Ø70 to Ø120 (Ø2.76 to Ø4.72)